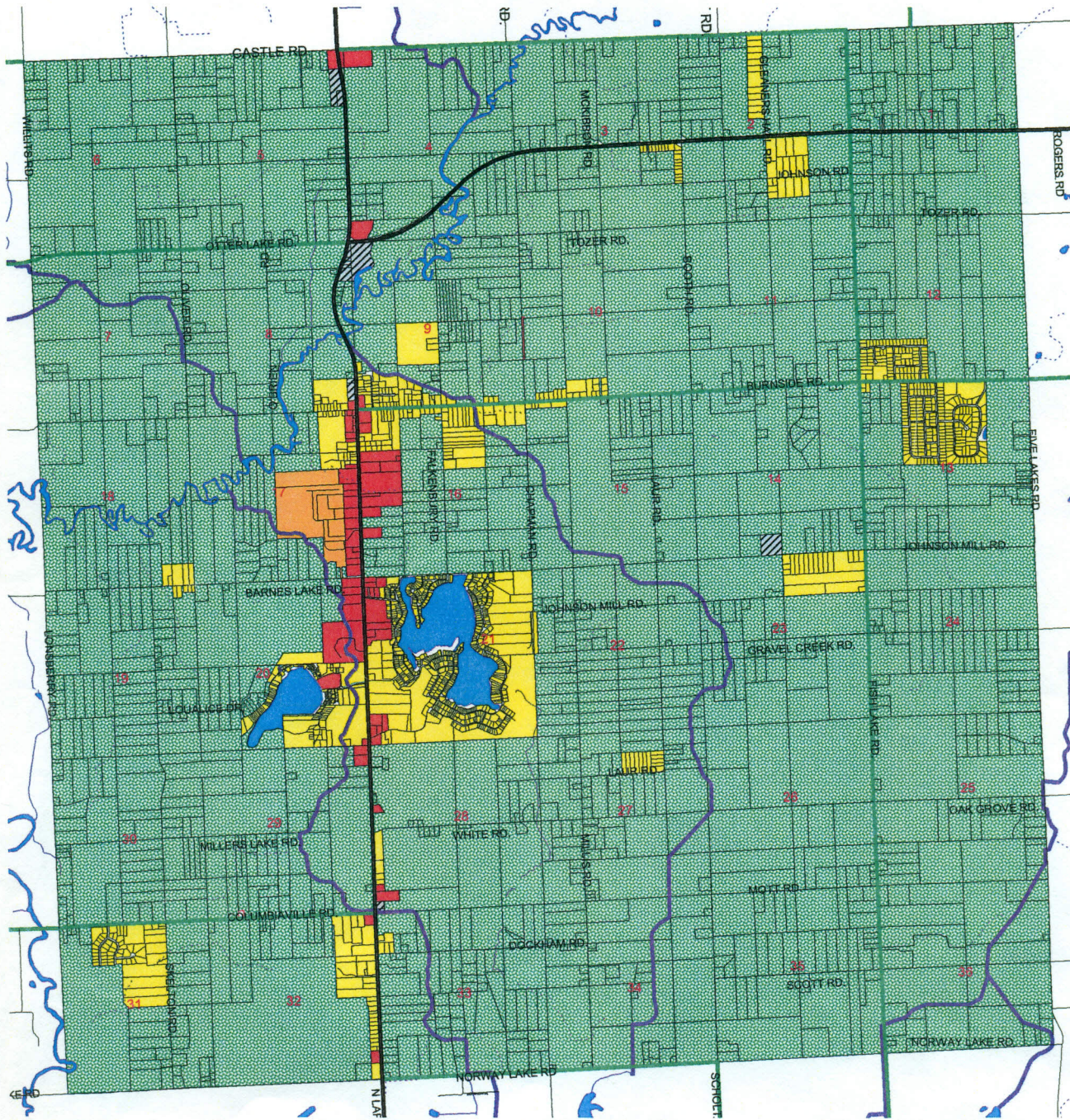








# DEERFIELD TOWNSHIP ZONING MAP



  
**NORTH**  
 1"=5,000"  
 Adopted May 11, 1983  
 (including amendments  
 through March 1, 2000)

-  **C** COMMERCIAL
-  **I** INDUSTRIAL
-  **R-1** AGRICULTURAL-RESIDENTIAL
-  **R-2** SINGLE FAMILY RESIDENTIAL
-  **RMH** MOBILE HOME PARK

PRODUCED (08-2009) BY:  
 LAPEER COUNTY EQ/GIS/TREAS  
 255 CLAY ST #303, LAPEER MI 48446  
 810-667-0228 or 810-667-0239